

## Miniature Pulse Valves

A normally open 3-way valve that closes shortly after being pressurized and remains closed until supply pressure is exhausted and repressurized. Widely used in control circuits.



**Medium:** Air

**Input Pressure:** 40-150 psig/20 bar max.

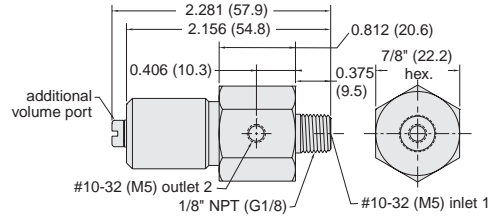
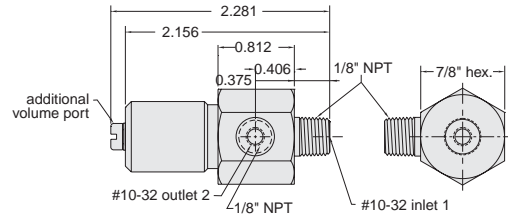
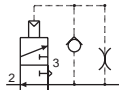
**Mounting:** 1/8" NPT (G1/8) thread; nut furnished

**Volume Chamber:** #10-32 (M5)

**Operation:** Converts a continuous supply of inlet air into a pulse of approximately 100 milliseconds

**Response:** 300 cycles per minute; time delay may be increased by adding standard Clippard volume chambers not to exceed 3 cu. in.

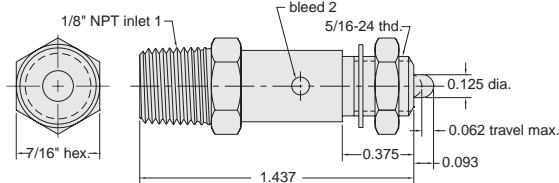
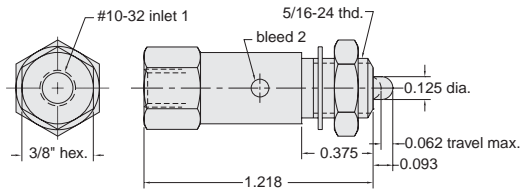
**Construction:** Body - brass, Seals - Buna-N rubber, Spring - stainless steel, Poppet - Delrin®



Part No.	Description
PV-1	Pulse Valve, #10-32
PV-1-M5	Pulse Valve, M5 Metric
PV-1P	Pulse Valve, 1/8" NPT

## Normally Closed 2-Way Pilot Sensor

For use with pressure piloted control circuits, can repeatedly detect a position within 0.005" properly mounted. In jigs or fixtures it will signal correct position and start-ok to control circuit.



**Medium:** Air

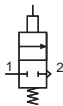
**Stem Travel:** 1/16" max. (will open and close in as little as 0.005")

**Input Pressure:** 300 psig max.

**Air Flow:** 3 SCFM @ 50 psig; 6 SCFM @ 100 psig

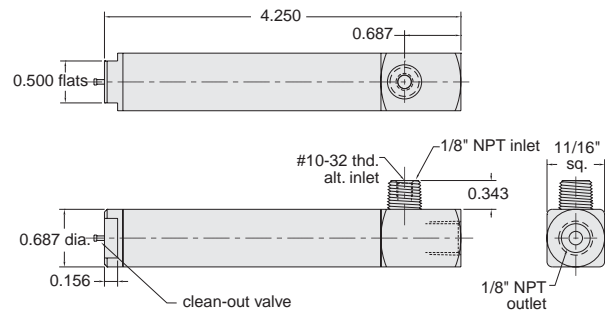
**Force For Full Stem Travel:** 7 oz. nominal

**Mounting:** #15/16-24 thread. Nut and lockwashers furnished



Part No.	Description
MPS-2	Poppet Valve with Pilot Sensor, #10-32
MPS-2-P	Poppet Valve with Pilot Sensor, 1/8" NPT

## Replaceable Air Filter with Element



**Medium:** Air Only

**Filtration:** 35 micron

**Input Pressure:** 0-250 psig max.

**Air Flow:** 5.0 SCFM @ 50 psig; 9.0 SCFM @ 100 psig

**Material:** Brass

**Mounting:** Direct or inline

**Cleanout:** Press clean-out valve stem periodically to remove accumulated water. For complete cleaning, filter body unscrews at point "A" without disturbing piping. DO NOT DISASSEMBLE UNDER PRESSURE. Remove screw and filter element to clean or replace



Part No.	Description
MAF-1	Replaceable Air Filter with Element
12382	Low Pressure Drop, Concentric, Chemically-Inert 35-micron Filter Elements